

# DOCKAGE RATES\*

CALL FOR COMMERCIAL RATES

## TRANSIENT SLIPS

\$2.50 per ft/day under 50ft.

\$3.50 per ft/day 50ft. & over

## MONTHLY SLIPS

\$15.00 per ft/monthly A, B & C docks

\$16.00 per ft/monthly D dock

\$17.00 per ft/monthly E, F, G & I docks

## WEEKLY SLIPS

\$15.00 per ft/week under 50ft.

\$18.00 per ft/week 50ft. & over

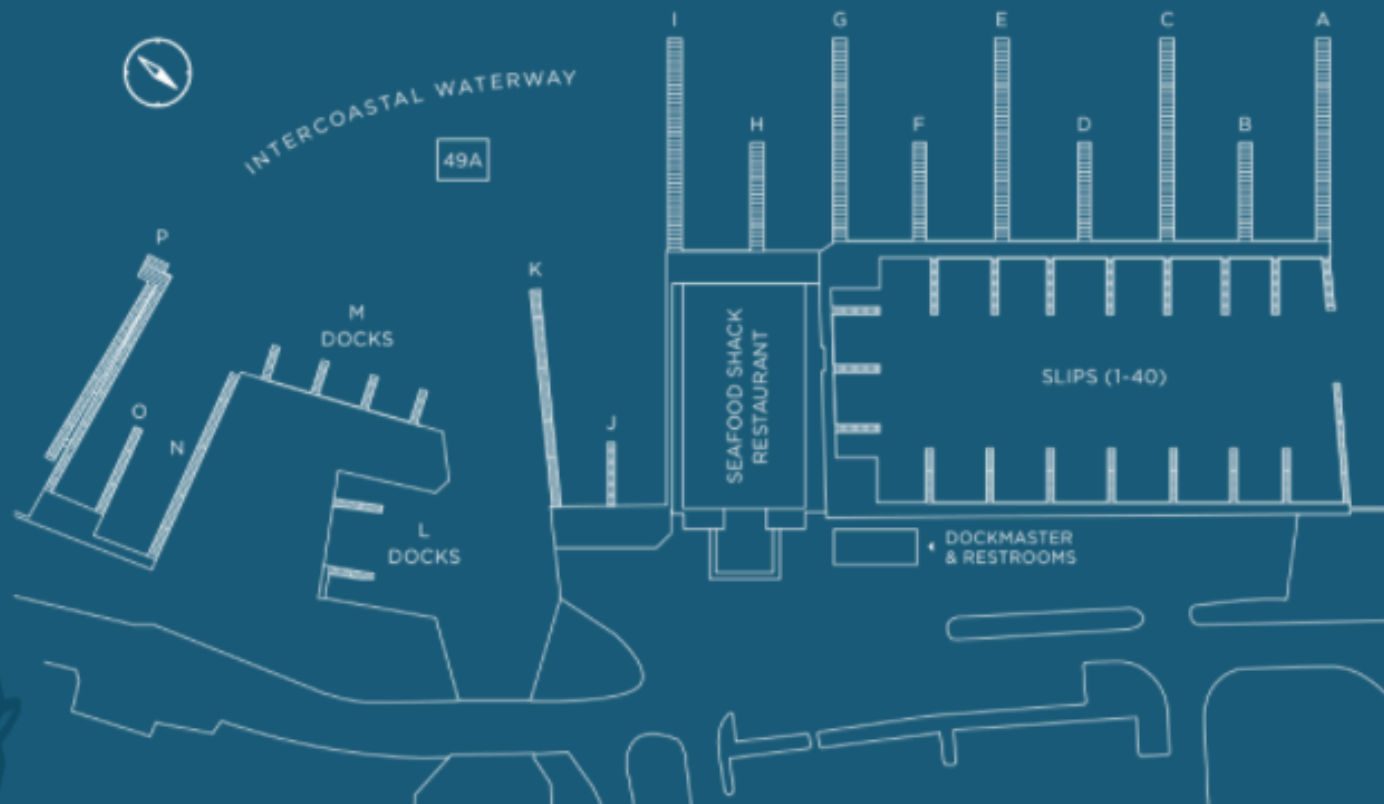
## ELECTRICAL & UTILITIES

(1) 30amp \$45.00/month

(2) 30amp or (1) 50amp \$90.00/month

(2) 50amp \$180.00/month

\*All rates are subject to 7% sales tax. Rates availability & information are subject to change without notice. Dockage rates are based on slip size or vessel LOA, whichever is greater.



SEAFOODSHACK.COM